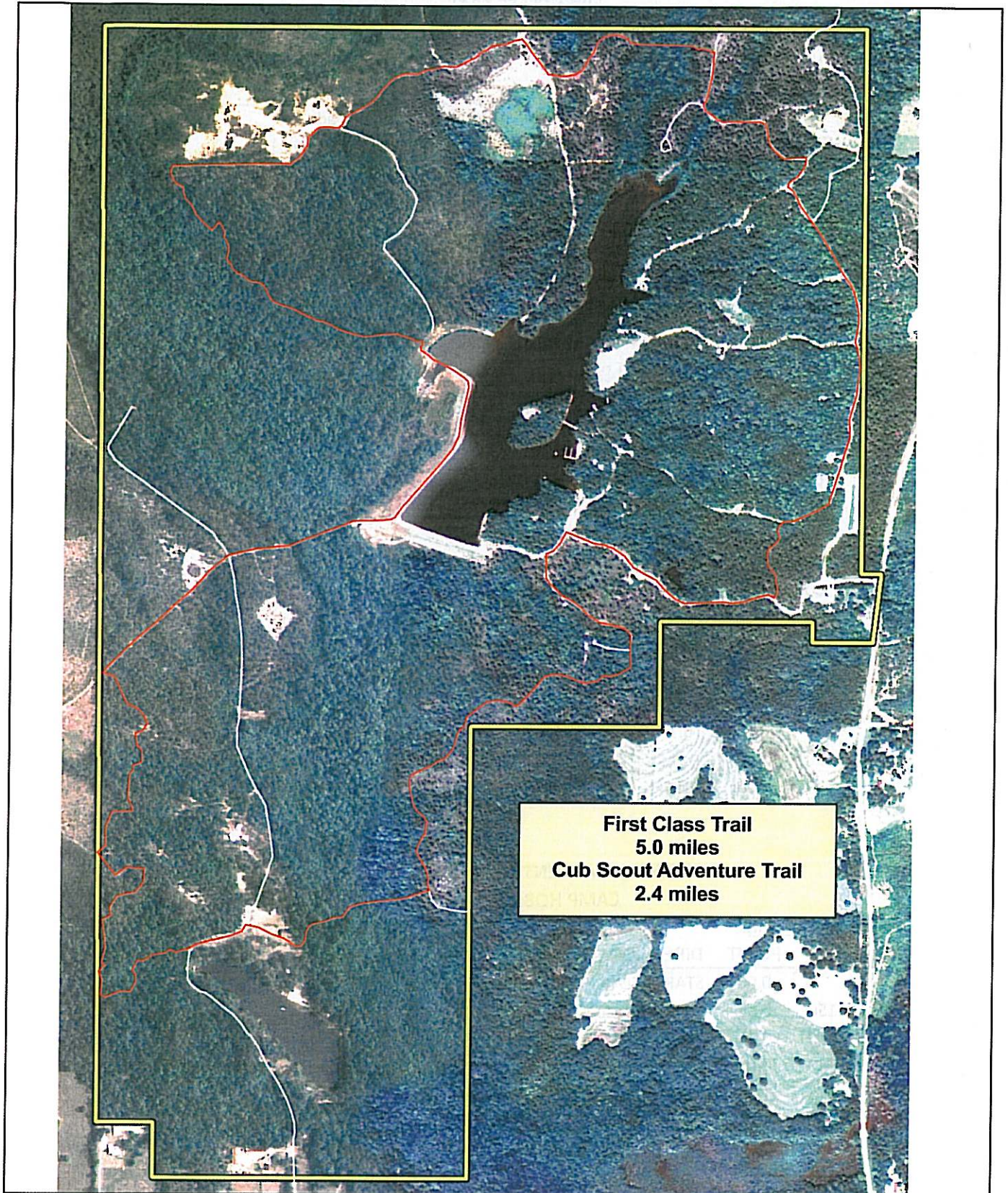


*Camp Tukabatchee
Warner Scout Reservation*



TRAIL GUIDE

FIRST CLASS TRAIL CAMP TUKABATCHEE

INTERVAL (yards)	MILE POINT	DIRECTIONS
	0.00	START: Camp Tuk Gate - go NORTH on camp road
710	0.41	Turn right onto Kershaw Road (toward shooting sports)
80	0.46	Turn WEST onto North Bridge trail
315	0.64	Junction with Lookout Point Trail, continue NORTH
175	0.73	Turn WEST onto North Bridge
80	0.78	Cross boardwalk, resume North Bridge Trail
275	0.94	Turn NORTH onto Lake Road
100	0.99	Turn WEST onto North Road
500	1.28	AKELA FOREST - go WEST on Akela Forest Trail
174	1.38	Turn WEST onto Fire Break Trail
230	1.51	Turn SOUTH, then SOUTHEAST on Old Log Trail
850	1.99	Turn SOUTH on Borrow Pit Road
34	2.01	Cross Spillway, Follow Dam Trail
468	2.28	Turn WEST onto Two Dollar Road
400	2.50	Cross Two Dollar Bridge, Continue WEST at Four Corners
350	2.70	Turn SOUTH onto ALIBAMU Trail
1370	3.48	Turn EAST on Hobbs Road
220	3.60	Visit Flagpole at Camp Hobbs, go EAST on Dawson Trail
150	3.68	Cross Dawson Trail Boardwalk
270	3.84	Turn NORTH onto Dawson Trail Fire Road
1080	4.45	End Dawson Trail, Turn Right on Road
75	4.49	Turn EAST on camp road
520	4.78	Turn NORTH onto Hinkle Highway
200	4.90	Turn NORTHEAST onto Admin Road
190	5.00	FINISH - Camp Tuk Gate

CUB SCOUT ADVENTURE TRAIL CAMP HOBBS

INTERVAL (yards)	MILE POINT	DIRECTIONS
0	0.00	START - FLAG POLE at Camp Hobbs - go EAST on Dawson Trail
150	0.08	Follow Dawson Trail Boardwalk
270	0.24	Turn NORTH on Dawson Trail Fire Road
1080	0.85	End Dawson Trail, go WEST on Camp Road
375	1.06	Cross Dam, go WEST on Two Dollar Road
400	1.29	Cross Two Dollar Bridge, go WEST at Four Corners
350	1.48	Turn SOUTH onto the ALIBAMU Trail
1370	2.26	Turn East on Hobbs Road
220	2.40	FINISH - Flag Pole at Camp Hobbs